



Tabi's Characters

1006 Alice



"Alice"
1006

4 - 5' above the floor
length. Daintily detailed
with laces, satin ribbon
and pearly buttons.
Georgette and Satin
S-M-L

No Accessories



Marie Antoinette

8012 Exquisite gown is made in taffeta with intricate soutache embroidery. Blouse, skirt
S-M-L fronts and sleeves are adorned with ruffles. Bouffant skirt with full underskirt.

No Accessories



"Louis 16th"

1003

Exquisite gown is made in taffeta with intricate soutache embroidery. Blouse, skirt fronts and sleeves are adorned with ruffles. Bouffant skirt with full underskirt. Back zipper.

M-L-XL-2XL

No Accessories



"Pirate - First"

9003

(8) pcs. In suede and gauze accented with leather. Vest, knickers, shirt, boot covers, sash, waist and shoulder belts.

M-L-XL-2XL

No Accessories



"Sexy Pirate Skirt"

#9006

Skirt only.

Short skirt with V-shaped front yoke.
Double layered circular skirt is in patchwork and solid taffeta.

S-M-L

No Accessories



"Lady Pirate"
#9005

(4) pcs. This sexy corset top is in Faux Suede & Leatherette. Front applique, hem loops, eyelet closure back. Combined with a balloon skirt in patchwork/solid taffeta. Separate sleeves.

No Accessories

S-M-L



"Pirate Shirt"
#9007
M-L-XL-2XL
No Accessories



"Swashbuckler"

9002

(7) pcs. Long straight jacket is in Faux Suede and jacquard combination. Assembled with knickers, shirt, boot covers. Waist and shoulder belts are in Leatherette.

M-L-XL-2XL

No Accessories



"Buccaneer"

#9004

(8) pcs. Wonderfully detailed jacket, knickers and boot covers are in Faux Suede. Combined with a shirt, sash, waist and shoulder belts.

M-L-XL-2XL

No Accessories



"Sexy Gypsy Skirt"

#9011

Short double layered circular skirt in patchwork
and solid taffeta combination.

S-M-L

No Accessories

"Gypsy Woman"

#9010

This sassy costume has vest with front eyelets, 4-layer handkerchief hem skirt,
blouse and hip scarves.

S-M-L

No Accessories



"Sexy Red Captain"

#9008

Fitted coat and vest are in velvet. Trimmed with gold. Lace jabot and ruffled cuffs.

S-M-L

No Accessories



"Red Captain"

#7724

Six-Piece outfit in velvet. Coat has contrasting front overlay and collar to match knickers. Lace jabot & ruffled cuffs.

M-L-XL-2XL

No Accessories



"Queen Elizabeth"

#9013

Stunning gown is in richly embroidered taffeta. Contrasting diamond pin-tuck is also in taffeta. Bouffant skirt, standing collar and back zipper.

S-M-L

No Accessories



"Queen Elizabeth"

#7911

Stunning Elizabethan gown features embroidery on sleeves and front skirt inset, bouffant skirt, standing collar and back zipper.

S-M-L

No Accessories



"King"

#7912

Majestic 16th century king's attire. Doublet, breeches and cape with velvet top layer.
(Pleated collar sold separately)

M-L-XL-2XL

No Accessories



"16 Century King"

#8011

Regal tapestry coat has faux fur collar. Jacquard shirt and velvet hat are decorated with jewels and feather.

M-L-XL-2XL

No Accessories



"16th Century Queen"

#8010

Elegant dress accented with stripe tapestry and gold trim.
Separate faux fur collar included.

S-M-L

No Accessories



"Louis 16th"
7710
M-L-XL-2XL

"Marie Antoinette"
7711
S-M-L

No Accessories



"History Costumes"

7938

M-L-XL-2XL

7939

S-M-L & Plus size

No Accessories



"Mozart"

7704

M-L-XL-2XL

No Accessories



"Lady Mozart"

7705

S-M-L

No Accessories



"Lady Amadeus"
7703
S-M-L

"Amadeus"
7702
M-L-XL-2XL

No Accessories



"Josephine"

7910
S-M-L

No Accessories



"Cape"

7940
S-M-L

No Accessories



No Accessories



"Napoleon"

7715

M-L-XL-2XL

No Accessories



"Pretty Elf"

8016

Whimsical elf's outfit trimmed with gold in poly velvet. Back zipper, includes hat.

S-M-L

No Accessories



"Elf"

7924

Colors: Red & Green

M-L-XL-2XL

No Accessories





"Vampire"

1005

Long flared coat in black velvet with wine lining. Matching pants and silver brocade vest.

M-L-XL-2XL

No Accessories



"Vampires"

1004

Stretch velvet dress with wine
accente. Separated drape belt.

S-M-L

No Accessories



"Elegant Witch"

9015

Our witch is beautifully adorned with feathers on bib, cuffs and bustle. Self covered belt.

S-M-L

No Accessories



9017
S-M-L

No Accessories



"Snow Ghost Cape"

9016

Long flowy delicate cape has five layers of sheer fabric. Graceful when worn with a simple yet elegant white velour dress (#9017- sold separately).

Ones size fits all

No Accessories



"Warrior Prince"

#7941

Tunic with embroidered lion crest. Sleeves, hood, undertunic (skirt) are in metallic mesh and lined. Leggings, shoulder guard, arm guards and belt are included.

M-L-XL-2XL

No Accessories



"Maid Marion"

7723

Gown is complimented with cable rope piping and corset belt with eyelet. Hood and headdress included.

S-M-L



"Robin Hood"

7722

Shirt has keyhole with eyelets. Pants has ties. Suede vest has faux leather trims with nail heads. Cape, hat & belt included.

M-L-XL-2XL

No Accessories



"Musketeer"

7719

Velvet tunic is lined with brocade.
Applique on chest.

M-L-XL-2XL

"Musketeer Lady"

7718

Velvet and brocade gown, eyelet back, separate collar and cuffs trimmed with lace.

S-M-L

Black, Royal Blue

No Accessories



"Colonial Soldiers"
7734
M-L-XL-2XL
No Accessories



"Colonial Soldiers"
7735
M-L-XL-2XL
No Accessories



"Colonial Costume"



"Colonial Costume"

#8013

Solid three piece jacket & vest. Breeches with seam pockets.

Black, Brown
M-L-XL-2XL

No Accessories



"Union Officer"

7741

Double breasted jacket with contrasting collar and cuffs, with gold trim. Trousers with pockets. Satin sash with fringed ends.

M-L-XL-2XL

No Accessories



"Confederate Officer"

7742

Double breasted jacket with contrasting collar and cuffs, sash with fringed ends, emblem on sleeves. Trousers has contrast braid on side seams, pockets.

M-L-XL-2XL

No Accessories



"Soldier"

7743

Jacket with contrast color trim. Trousers with braid on side seams,pockets.

M-L-XL-2XL

No Accessories



Prince, Rhett Butler
8015

Gabardine frock coat with
velvet collar & cuffs.

Black, Brown

M-L-XL-2XL



"Old South"

7740

Blouse & Skirt in printed organza. Hook and eyefront, fully lined.
Green velvet belt included.

S-M-L (Plus size)

No Accessories



"Southern Belle"

7744

Lovely lace gown
can be worn on
or off shoulders.

Ruffles are
edged with lace
trim.elt, back
zipper.

Lilac, Blue
S-M-L

No Accessories



"Old South-Curtain"

7739

We've improved already gorgeous gown by lowering front neck, making sleeves and cape longer, and added a beautiful hat.

Layered skirt with pleated waist.

Rope belt.

S-M-L

No Accessories



"Gunslinger"

7749

Contrast velvet vest.

M-L-XL-2XL

No Accessories



"Madame-Southern Belle"

7919

Fabulous gown has attached full length petticoat with lace flounce showing at the hem.

S-M-L

No Accessories



No Accessories



No Accessories



No Accessories



No Accessories

"Saloon Girl"

7747

More of good thing. We've added more colors! This charming dress has attached petticoat with many rows of ruffles inside.

S-M-L



"Cleopatra"
7727

Opulently decorated three-piece set. Collar, cuffs and belt are intricately placed with gorgeous faux precious stones, studs and trims to create their glamorous appearances.

Skirt and cape are beautifully sunburst-pleated.

S-M-L

No accessories



"King of Egypt"

7729

Headdress collar and belt in faux leather, decorated with medallians and rhinestones. Collar has eagle applique.

M-L-XL-2XL

No accessories



"Loga"
7732
S-M-L

"Caesar"
7733
XL-2XL

No accessories



"Roman Soldier"

#7437

One Size

No accessories



"Three Wise Men"

8001

Robe, sleeveless tunic, cape, belt and turbin.

M-L-XL-2XL

No Accessories



"Roman Queen"

7916

Graceful Empire - Waist Gown in Georgette and chiffon. Double layered skirt and flowing sleeves. Brooch included. Dusty Rose, Beige

S-M-L

No Accessories



"Angel"

7926

Tranquil beauty of this empire-waist gown is simply angelic. Skirt and flowing sleeves are wire hemmed. Bodice and skirt are lined.

S-M-L-XL

No Accessories



"Fairy"

7925

Beautiful dress with lined bodice. Fluttering double skirt with frilly wired hem.

Peach, White

S-M-L-XL

No Accessories



"Carolers"

8004

Reversible cape, with plaid taffeta inside.
Skirt with contrast piping, faux fur muff, and velvet hat included.
S-M-L and Plus size. (Colors:Red and Green)

No Accessories



"Gentleman"
7942

Handsome morning coat in black gabardine, pin stripe trousers in grey herringbone suiting with seam pockets. Grey velveteen vest.

M-L-XL-2XL

No Accessories



"Dickens"
8005



"Carolers"
8006

Delightful four piece. Reversible cape, with plaid taffeta inside.
Skirt with gold trim, faux fur muff, and velvet hat included.
S-M-L and Plus size. (Maroon and Green)

No Accessories

Dandy tailsuit. Double-breasted jacket and vest are lined. Placket detail on pants and seam pockets
(Maroon and Green)
M-L-XL-2XL

No Accessories



"Carolers"
8006

Delightful four piece. Reversible cape, with plaid taffeta inside.
Skirt with gold trim, faux fur muff, and velvet hat included.
S-M-L and Plus size. (Maroon and Green)

"Dickens"
8005

Dandy tailsuit. Double-breasted jacket and vest are lined.
Placket detail on pants and seam pockets
M-L-XL-2XL (Maroon and Green)

No Accessories

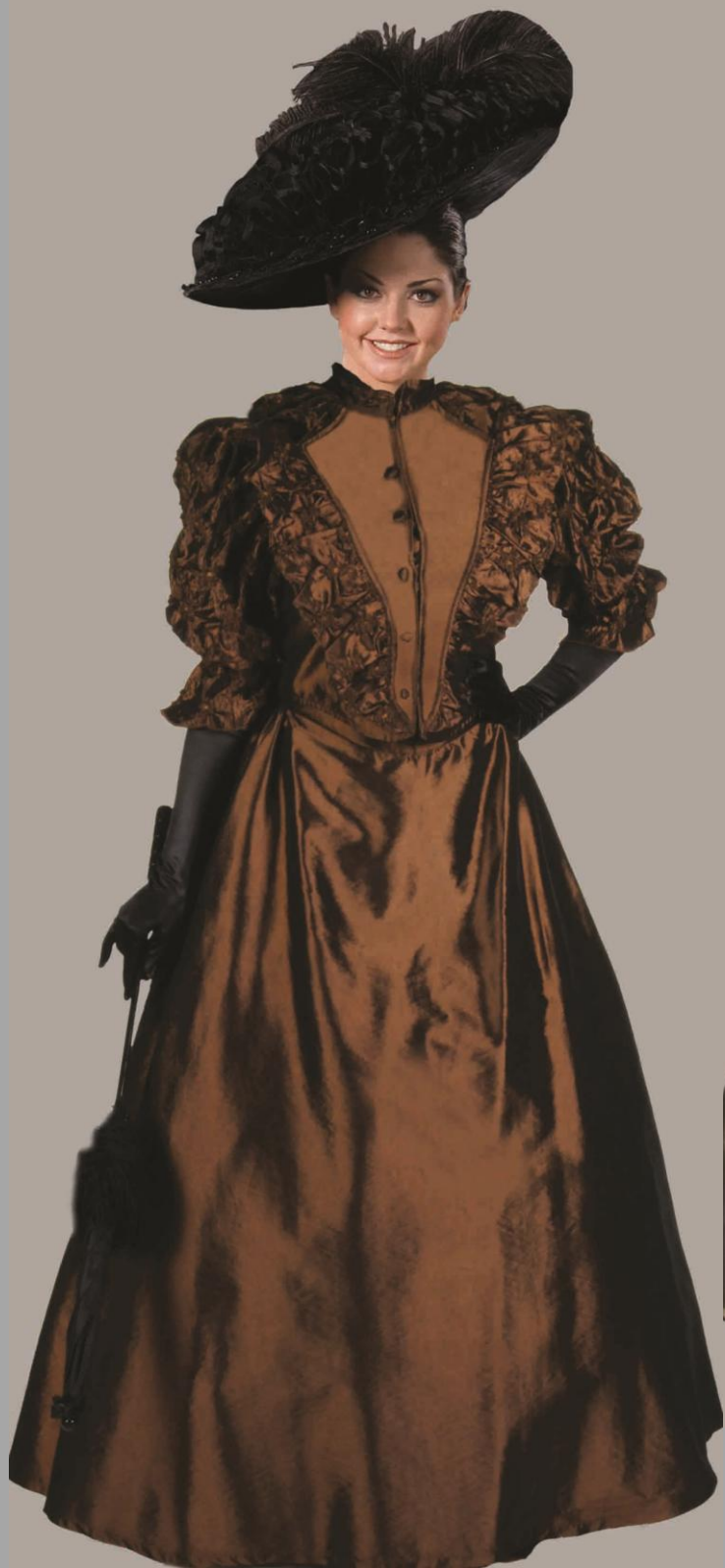


"Victorian Dress-Janet"

7934

Dramatic two-piece Victorian in gleaming woven stripe and plaid taffeta. Jacket has hook and eye front, skirt has back zipper. Colors: Blue, Olive Gold
S-M-L

No Accessories



"Victorian Dress-Annie"

7937

Plain and smocked shimmering taffeta are combined for this beautiful Victorian.

Colors: Olive, Brown

S-M-L

No Accessories



"Emma"

7754

Classic Victorian gown in satin back crepe with contrasting trim.

Includes beaded choker and bustle (hip pillow)

Colors: Cream, Purple

S-M-L

No Accessories



"Victorian Dress"

Isabel

7922

Satin back crepe with contrasting trim, lace sleeves, includes beaded choker and bustle.

Colors: Cream, Purple

S-M-L

No Accessories



"Sadie"

7755

Graceful Victorian top is detailed with pleated yoke hem in front, bow and ruffles at back hip.
Back zip on both, elastic waist skirt. Brooch included Colors: Red, Green, Black

S-M-L

No Accessories



"Lady Ascot"

7774

S-M-L

No Accessories



"Lady Aristocrat"

7928

S-M-L

No Accessories

Sophisticated pin stripe jacquard dress with contrast velvet accent. Covered button detail



"Titanic"

7772

Fabulous taffeta dress with faux fur trim, puff sleeves with lower sleeve in lace, sequin trim at neck and attached belt.

S-M-L

No Accessories



"Matador"

7843

All pieces are richly decorated with gold trims. Front bolero and shoulder epaulettes are embellished. High waist pants.

XL-2XL

No Accessories



"Spanish Dancer"

7840

Black w/ Floral

S-M-L

No Accessories



"Bandit"

7844

Pullover shirt with keyhole eyelet opening. Comes with pants, cape and mask.

XL-2XL

No Accessories



7841
Black and Red

"Flamenco Dancers"

7842
Red and Black

Deep scoop neck and ample flounces are edged with lace trim.
Includes headdress with comb.

S-M-L

No Accessories



"Mad Hatter"

7776

Lighthearted velvet morning coat, printed velour vest with contrast collar. Plaid pants pockets, dickey, tie, exaggerated top hat in velvet.

M-L-XL-2XL

No Accessories



"Alice"

7778

Alice's playful dress is in light weight satin, trimmed with eyelet lace. Back zipper. Comes with frilly apron.

S-M-L

No Accessories



"Hatter"

1007

Crushed velvet jacket has braid details on sleeve cuffs, collar and lapels. Double-breasted jacquard vest, stripe mid-calf length pants, bow and matching hat included.

M-L-XL-2XL

No Accessories



"Hatter"
1009
Patchwork printed
Gaberdine.
M-L-XL-2XL

No Accessories



"Sweet Guy"

7777

Tastefully assembled mid 19th century attire. Velvet frock coat, contrasting vest, bow-tie, plaid trousers with seam pockets.

M-L-XL-2XL

No Accessories



"Spoon Full of Sugar"

7773

Delightful dress has contrasting lace ruffled front and gored skirt. Contrast piping around attached capes and peplums. Stand collar and bow-tie.

Black, Red

S-M-L

No Accessories

"Cardinal-Pope"

7760

Holy robe with attached cape, contrast piping, seam pockets, button front. Matching skull cap, red satin sash. Colors: White, Black, Red. M-L-XL-2XL



No Accessories



"Priest"

7761

Holy robe with attached cape, seam pockets,
button front. Matching skull cap.

Black , White

M-L-XL-2XL

No Accessories



Story Book Princess #1

7930

Romantic blouse and skirt set. Border eyelet lace with sparkling sequins on poly organza. Fully lined. Back zipper and bow.

S-M-L

No Accessories



Story Book Prince #1

7931

Dashing prince suit. Opulently adorned with gold trims. Double-breasted jacket with tails. Trousers with seam pockets. Includes sash and pin.

M-X-L-2XL

No Accessories



"Story Book Princess #2"

7920

Lovely one-piece gown
in shimmering poly
shaantung and chiffon.

Back zipper,
brooch included.

S-M-L

No Accessories



"Story Book Prince #3"

7918

M-L-XL-2XL

No Accessories



Story Book Princess #3
7933

Charming fairytale ensemble (blouse, skirt, cape, headband) in bridal satin.

Back zipper on blouse and skirt with elastic waist.

S-M-L

No Accessories



"Celebrate Mardi Gras"

7753

Enchanting pullover dress has scoop neck and attached petticoat. Flower pin.

S-M-L

No Accessories



7752

Colorful tailed velvet coat, multi colored vest, stripe breeches with pockets, lace Jabot and cuffs.

M-L-XL-2XL

7751

Charming two-piece in organza and rainbow-color-print tulle with sequin trim. Back zipper blouse.

S-M-L

"Celebrate Mardi Gras"

No Accessories



"King Rock Star"

7853

Spectacularly decorated '70s jumpsuit. Front zipper opening, red satin insets at side pant legs, fully lined. Belt included.

S-M-L-XL-2XL-3XL

No Accessories





"King Cape"

7948

Spectacularly decorated cape.

Sold separately.

One size

No Accessories



"70s Rhinestone Jumpsuit"

7855

White jumpsuit is fully lined with cape.

White,Black,Red,Blue

S-M-L-XL-2XL-3XL-5XL

No Accessories



Rhinestone

Two-Piece

7859

Outfit is decorated with clusters of diamond-shaped studs encircling rhinestones,zip front.Whites are fully lined,with cape.

White,Black,Red,Blue

S-M-L-XL-2XL

No Accessories



"Hunk Jumpsuit"

7858

Decorated with textured diamond-shaped studs, contrast satin shows through eyelet hole at front neck and collar. Belt and cape included.

Black and Royal Blue

S-M-L



"Boy Rocker"

7943

Black and White

S-M-L

"Queen of Rock 'n Roll"

7863

Sensational jumpsuits decorated with multi-colored rhinestones and gold studs, high collar, bell bottom pants. Gold under collar, Belt included.

Black and White

S-M-L



No Accessories

No Accessories

"Gold Lamé Suit"

7860

Showy gold lamé suit, has
silver lamé shawl collar.

M-L-XL-2XL

"Jacket only"

7861

M-L-XL-2XL



No Accessories



"Leather Two-Piece"

7862

Sharp looking leatherette
suit with high collar.

M-L-XL-2XL

No Accessories



"70s Disco"

7820

Dazzling disco pant set. Eyelet front. Pants have three layers of ruffles. Applique on collar and pant's knees. Trimmed edges. Belt included.

Green, Blue, Fuchsia, Silver
S-M-L

No Accessories



"Disco Man"

7821

Blue, Fuchsia, Silver

L-XL-2XL

No Accessories



"White Halter"

7782

Seductive halter dress.
Bra is double layered for
coverage, back bodice
and waist have elastic for
better fit. Circular skirt is
sunburst-pleated and
lined.

S-M-L

No Accessories



'60s 'Grey Suit'

7909

Grey heather poplin. Contrast
cord piping at neck, front and
welt pockets.

Pants with seam pockets.

M-L-XL-2XL

No Accessories



"60s Nehru Tuxedos"

7905

Elaborately trimmed '60s foursome in brilliant colored satin. Knee length jackets feature velcro front and fringed shoulder epaulettes. Pants with trimmed side seams, pockets and elastic waist.

M-L-XL-2XL

No Accessories



"60s Nehru Tuxedos"

7906

Elaborately trimmed '60s foursome in brilliant colored satin. Knee length jackets feature velcro front and fringed shoulder epaulettes. Pants with trimmed side seams, pockets and elastic waist.

M-L-XL-2XL

No Accessories



"60s Nehru Tuxedos"

7907

Elaborately trimmed '60s foursome in brilliant colored satin. Knee length jackets feature velcro front and fringed shoulder epaulettes. Pants with trimmed side seams, pockets and elastic waist.

M-L-XL-2XL

No Accessories



"60s Nehru Tuxedos"

7908

Elaborately trimmed '60s foursome in brilliant colored satin. Knee length jackets feature velcro front and fringed shoulder epaulettes. Pants with trimmed side seams, pockets and elastic waist.

M-L-XL-2XL

No Accessories



"70s Rock Band"
7901

Studded leotard, front zipper. Quilted armor (vest), cuffs & boot covers.

M-L-XL-2XL

No Accessories



"70s Rock Band"
7902

Eyelet front leotard with cords at thighs. Shoulder belts, waist belt, cuffs, boot covers and choker are all in leatherette and studded.

M-L-XL-2XL

No Accessories



"70s Rock Band"

7903

Star-patterned studs on leotard and gloves. Belt, choker
and boot covers are also studded leatherette.

M-L-XL-2XL

No Accessories



"70s Rock Band"

7904

Leotard, satin cape, studded choker chained to body armor, cuffs and boot covers.

M-L-XL-2XL

No Accessories



"Artist's Shirt"

#9021

M-L-XL-2XL

No Accessories



"80s Music Artist"

#9020

Two pieces in crushed velvet. Long, double-breast jacket with one-sided shoulder yoke. Pants have shirring at lower legs.

M-L-XL-2XL

No Accessories



"Pop Singer"

#8021-J

Red short jacket with front zipper. In patent leather.

M-L-XL-2XL

No Accessories



'80s Drapper

8022

Wild gusseted pants suit in sparkling fabric. Short jacket with V-neck, double-breasted, elastic back waist and side tabs. Matching pants with seam pockets.

M-L-XL-2XL

No Accessories



"80s Pop Singer"

8017

Naughty pin stripe suit. Double - breasted jacket has peekaboo openings at breast so that the bra can be seen through them.

S-M-L

No Accessories



"80s Pop Singer"

8018

Naughty pin stripe suit. Double - breasted jacket has peekaboo openings at breast so that the bra can be seen through them.

S-M-L

No Accessories



Sexy Lady in Pink

8020

Sexy strapless dress with zipper, high skirt slit and big bow at back waist.
Covered belt and gloves.

S-M-L

No Accessories

gh
..

"Pink Dress"

#9026

Prom night with a little attitude? This salmon pink lace dress is lined with fuchsia and black.

Belt and purse included.

S-M-L



No Accessories



"80s Prom"

#9025

This sweet prom dress has formfitting bodice in sequins and 3-tier ruffle skirt in shantung. Two self flowers included.

Back zipper.

S-M-L

No Accessories



Color as is
7832

"Disco Shirts"

7929

Green, Blue, Silver, Fushsia
M-L-XL-2XL

No Accessories

"Show Jackets"

7834

Red, Black, Blue, Silver, Gold
M-L-XL-2XL



"Flapper"

7775

Roaring '20s flapper.
Dress with rows of fringe.
Sequined shoulder straps
and front applique.

Red, Black
S-M-L

No Accessories



"Cowboy"

7835

"Cowgirl"

7836

Both styles are decorated with contrasting fringes and clear rhinestones.
Snap front and sleeve cuffs. Rhinestones on pant side.

M-L-XL-2XL

S-M-L

No Accessories



"Bonnie"

7784

Close fitting jacket, with flared back. Skirt with front kick pleat.

S-M-L

"Clyde"

7785

Gangster suit. Double-breasted jacket with notched collar. Pants with seam pockets.

M-L-XL-2XL

No Accessories



"Zoot-Suit"

7786

Black,Blue

M-L-XL-2XL

No Accessories



"50s Housewife"

7781

Semi-fitted bodice with mid-calf length circular skirt, front buttons. Separate apron.

S-M-L

No Accessories



"Fever"

7815

Traditionally tailored three piece set. Lined jacket and vest.

S-M-L-XL-2XL

No Accessories



'80s Detective
#8023

Casual fitting suit. Lined jacket, welt pockets. Sleeves
can be worn down or rolled up. Seam pockets.

Beige, Chocolate Brown, White & Pink.

M-L-XL-2XL

No Accessories



"Pinup #2"

7793
S-M-L

No Accessories



"Sailor"

7950

Sailor hat included
M-L-XL-2XL

"40s Nurse"

7951

Hat included
S-M-L

No Accessories



Pinup #3

7794

S-M-L

No Accessories



Pinup #4

7795

S-M-L

No Accessories



Pinup #5

7796

S-M-L

No Accessories



*"40s
WAC"*

7792

Our well tailored Army uniform
includes cap. Straight skirt has
a kick pleat.

S-M-L

No Accessories



"Navy Officer"

7800

M-L-XL-2XL

No Accessories



*"Air Force
Pilot"*

7798

M-L-XL-2XL

"Genie"

7799

S-M-L

No Accessories



"Mountie"
7801
M-L-XL-2XL

No Accessories



No Accessories

'40s Anchor's Away

7797

Navy, Beige Gold

S-M-L



No Accessories



"Leaders of the Band"

7790

7791

M-L-XL-2XL

S-M-L

No Accessories



7806

Red, Green

S-M-L

No Accessories



Cigarette Girl
7804
S-M-L
No Accessories



Bell Boy
7803
M-L-XL-2XL
No Accessories



"Evil Doctor and Child"

7813

M-L-XL-2XL

No Accessories



"Power Suit"

7812

Jacket with mock pocket flaps,
covered buttons. Not lined.
Matching pants with seam
pockets. Contrasting lace
jabot and cuffs included.

Blue,Red

M-L-XL-2XL

No Accessories

No Accessories



"Cartoon Boys"
7961
M-L-XL-2XL

No Accessories



"Cartoon Boys"
7962
M-L-XL-2XL

No Accessories



"Ricco the Boxer"

7964

Hooded robe and satin
boxing shorts. Patch
pockets on robe.

M-L-XL-2XL

No Accessories



"Cauffewi"

7802

Black, Grey

M-L-XL-2XL

No Accessories



"Ruffled Shirts"
7814

Black, Red, Orange, Pink, Lt. Blue, White, Green

M-L-XL-2XL

No Accessories



"Entertainer Tuxedos"

7811

Mock pocket flaps. Not lined.
Trousers with satin leg stripes, seam
pockets, satin cummerbund and
bow-tie included.

Black,Red,Orange,Pink,Lt.Blue,and
Green

Hats sold seperately.

Black,Red,Orange,Pink,Blue & Green

S-M-L-XL-2XL

No Accessories



Pimp Suit

7966

Colors: Black,Red
M-L-XL-2XL

No Accessories



7967

Flashy long coat with bell bottom pants, seam pockets.

Colors: Black,Red

M-L-XL-2XL

No Accessories



Sugar

7967

Sexy ,tight fitting mini skirt set.

Colors: Black,Red

S-M-L

No Accessories



"Tin Guy"

7827

M-L-XL-2XL

No Accessories



"Highlander"

7779

Red/Black, Green/Black

M-L-XL-2XL

No Accessories



"Been to the Moon"

7823

M-L-XL-2XL

No Accessories



"Fireman"
7810
M-L-XL-2XL
No Accessories



"Uncle Sam"

7807

M-L-XL-2XL

No Accessories



"60s Halter Dress"

7630

Flirty dress for fuller figured ladies comes with long sleeve bolero. Bras are double layered for coverage, elastic shirred back bodice gives comfort and range of sizes.

All back bodices are elastic shirred to give comfort and size range.

No Accessories



"Saloon Girl"

7633

Plus size. Fits 14-22

All back bodices are elastic shirred to give comfort and size range.

No Accessories



"Victorian Dress"

7635

Top for this dress is detailed with pleated yoke hem in front, bow and ruffles at back hip. Back zip, elastic waist skirt.

Red Black, Green

Plus size. Fits 14-22

All back bodices are elastic shirred to give comfort and size range.

No Accessories



"Flapper"

7632

Chiffon sleeves.

Red,Black

Plus Size.Fits 14-22.

No Accessories



"Flapper"

7631

Rows of fringe covers this luxurious dress with 3/4 length sleeves and V-neck.

Red,Black,Purple

Plus size. Fits 14-22

No Accessories



"Old South"

7648

Plus Size Fits 14-22

All back bodices are elastic shirred to give comfort and size

No Accessories



"History Costume"

7643

Blue, Gold

Plus Size Fits 14-22

All back bodices are elastic shirred to give comfort and size

No Accessories



"History Costume"

7643

Blue, Gold

Plus Size Fits 14-22

All back bodices are elastic shirred to give comfort and size

No Accessories



7610

Plus size. Fits 14-22

All back bodices are elastic shirred to give comfort and size range.

No Accessories



7645

Plus size. Fits 14-22

All back bodices are elastic shirred to give comfort and size range.



7646

Plus size. Fits 14-22

All back bodices are elastic shirred to give comfort and size range.



"Caroler"

7606

Red , Green

Cape reversible

Plus size. Fits 14-22

All back bodices are elastic shirred to give comfort and size range.

No Accessories



"Caroler"

7606

Red , Green

Cape reversible

Plus size. Fits 14-22

All back bodices are elastic shirred to give comfort and size range.

No Accessories



Shepard

3001

S-M-L-XL

No Accessories



Mary

3002

S-M-L-XL

No Accessories



Moses

3000

S-M-L-XL

No Accessories



16th Century Prince

3010

S-M-L-XL

No Accessories



16th Century Princess

3011

S-M-L-XL

No Accessories



Warrior Prince
3012
S-M-L-XL
No Accessories



*Amadeus
Beethoven*
3017
S-M-L-XL
No Accessories



*Amadeus
Pirate*
3016
S-M-L-XL
No Accessories



No Accessories
Thomas Jefferson
Beethoven,
Mozart
3021
S-M-L-XL



George Washington
Colonial Boy
3020
S-M-L-XL

No Accessories



Colonial Girl
3022
S-M-L-XL
No Accessories



Prairie Dress
3023
S-M-L-XL
No Accessories



*Abe Lincoln, Gambler,
Gunlinger, Riverboat*
3024
S-M-L-XL
No Accessories



"Astronaut"
(Child)
3032
S-M-L-XL
No Accessories



"Evil Child"
3037
S-M-L
No Accessories



*"Rhinestone Jumpsuit"
with Cape*

3036

White , Blue

S-M-L

No Accessories



*"Child Power
Suit"
3034
S-M-L
No Accessories*



MEN'S

Size	S	M	L	XL	2XL	3XL
Chest	36	40	44	48	52	56
Waist	30	34	38	42	46	50
Neck	14 1/2	15 1/2	16 1/2	17 1/2	18 1/2	19 1/2
Sleeve	33	34	35	36	36 1/2	37
Inseam	32	32	32	32-32 1/2	32-33	32-33 1/2

WOMEN'S

Size	S	M	L	14 - 22
Bust	34	36	39	42 - 48
Waist	26	28	31	34 - 42
Hip	36	38	41	44 - 50
Back Length	16	16 1/2	17	17 1/2

CHILDREN'S

Size	S	M	L	XL
Size	7	8 - 10	12 - 14	16 - 18
Height	51	56 1/2	61 1/2	66 1/2
Chest	26	28 1/2	32	35
Waist	23	25	27	29
Seat	26	28 1/2	32	35 1/2

Tabi's Characters

808 E. Jefferson Blvd. Los Angeles, Ca. 90011

tabis@sbcglobal.net

www.tabischaracters.com

Tel: 323-232-8011 Fax: 323-232-8016